



Group profile



BR GROUP
The Power of Unity



PRESENTATION

BR GROUP

is a holding company with exclusively Czech capital. It operates on the international market in the fields of industrial textile, mechanical engineering and plastic injection moulding and metal stamping of components for the automotive industry. It stands as one of the most significant private employment providers in the Czech Republic. The Group's main office is situated in Ostrava and it maintains operations in the Moravian-Silesian, Olomouc, Pardubice, and Liberec regions, along with international manufacturing sites. Over the past six years, the holding has strategically acquired six companies to maintain and support traditional Czech manufacturing brands.



14

13 manufacturing
companies
+ real estate company



3,000

employees



6

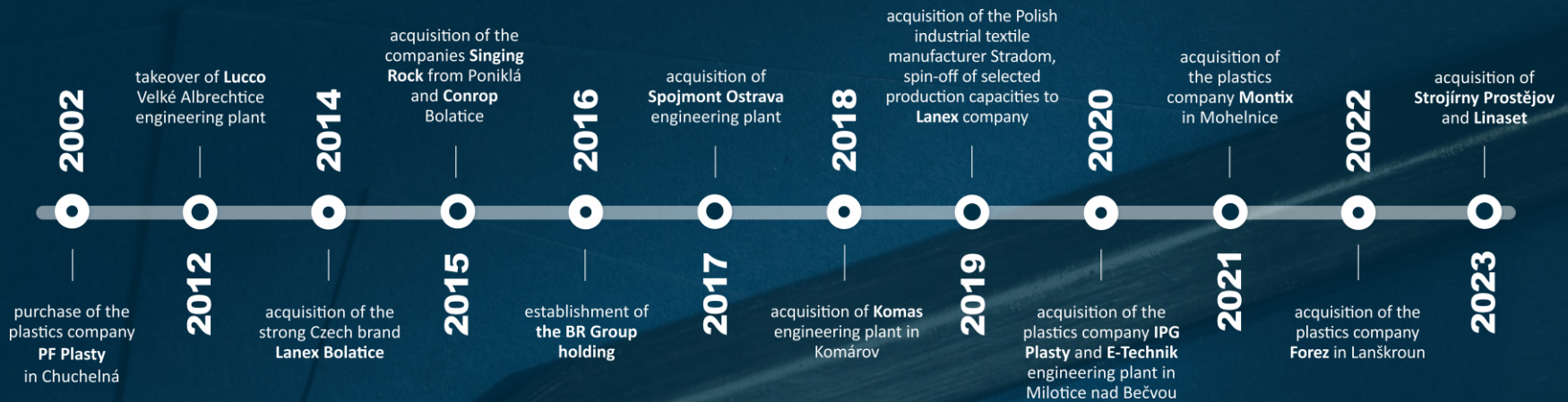
billion CZK turnover



100+

countries of export

BR GROUP HISTORY



BR GROUP STRUCTURE



BR INDUSTRIAL
TEXTILE

3 companies



BR AUTOMOTIVE

6 companies



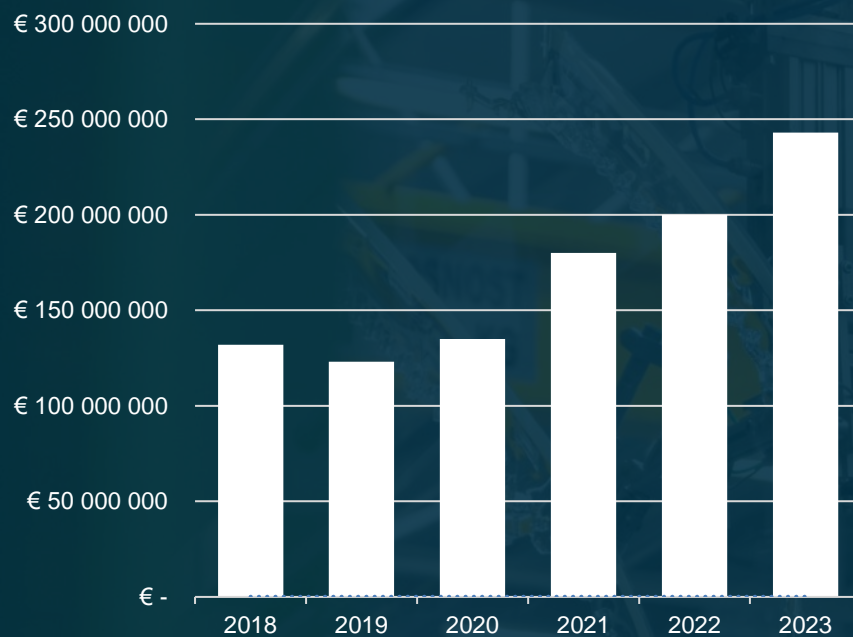
BR MECHANICAL
ENGINEERING

4 companies

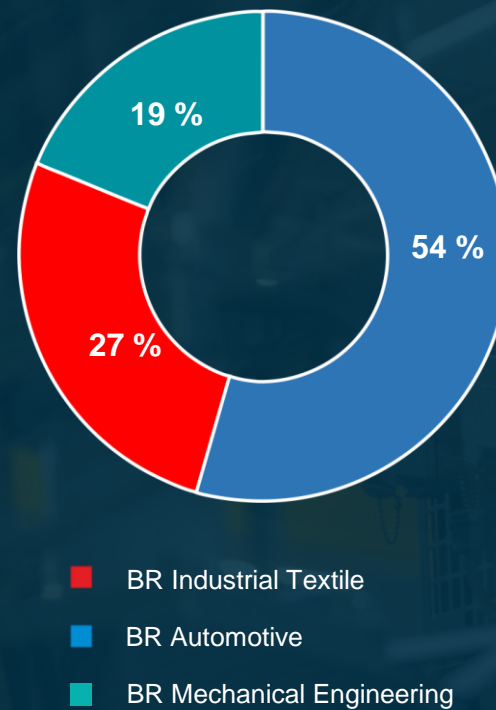


BR Reality

GROUP TURNOVER



SALES SHARE



EXPORT MAP

-  industrial textile
-  automotive
-  mechanical engineering





Lanex

A Czech manufacturer with over seven decades of tradition specialising in high-quality technical textiles. The company produces textile fibres, fabrics, and primarily ropes, which are products of its in-house research and development efforts. The company exports over 85 percent of its goods internationally. Its primary products encompass a variety of ropes such as dynamic and static safety ropes, carrier ropes for paper machinery, as well as ropes designed for maritime, yachting, and various sports and industrial applications. Lanex takes pride in being a trusted provider of static ropes for military use.



www.lanex.cz

CONROP

specialises in the creation, production, and export of a variety of technical and flexible packaging options. These products range from bags of various sizes to liners for containers, all designed for the packaging, management, transportation, and storage of solid and liquid substances, including construction supplies, medicinal items, chemical products, and food items. Conrop also crafts custom-made protective covers suitable for a range of military hardware such as land vehicles, aircraft, helicopters, and watercraft. The company operates manufacturing sites in both the Czech Republic and Slovakia, with a significant portion of its goods – exceeding 80 % – being shipped to twenty countries across the globe.



www.conrop.cz

singing rock

stands as one of the world's leading manufacturers of climbing gear and specialised personal protective equipment designed for work at heights, military operations, and rescue services. The output, which is the result of in-house manufacturing processes, is primarily directed towards export markets.



www.singingrock.com

BR AUTOMOTIVE

”

real drive
into the future

”

The Power
of Unity



Is an exclusively Czech manufacturer with long-term experience, especially in the automotive industry. It is a reliable partner for its customers and offers complex services in the field of injection mould design and manufacturing, plastic injection moulding, metal coating and assembly of sophisticated sets. It offers 3D measurement and testing according to the highest certification and quality standards of the automotive industry IATF 16949:2016. Montix produces components for Audi, VW, Porsche, Mercedes, BMW and other well-known car brands. Being a BR Group member since 2021, customer portfolio in both automotive and non-automotive sectors is gradually increasing.



www.montix.cz



has a rich history. Many of the buildings in Chuchelná date back to the early 20th century and still retain their historical architectural significance. Beginning in 1951, this location was among the earliest in the former Czechoslovakia to initiate plastic moulding operations. Presently, the company is engaged in the manufacture of thermo-plastic mouldings, primarily serving the automotive sector, in addition to supplying the electrical and pharmaceutical sectors, as well as producing items for gardens, household appliances, and electronic devices. In 2023, the company took a major step in enhancing its production facilities by integrating a new large-scale press with a clamping force of 2,300 tonnes, effectively doubling its manufacturing capacity. Consequently, the automotive division has started to concentrate on producing moulded components of a large size.



www.pfplasty.cz





is a manufacturer with over two decades of expertise, specialising in injection moulding of plastic optical components, particularly for the automotive sector. They are experts in producing transparent plastic parts, offering also 2K and 3K injection moulding. The company is equipped with an in-house development division dedicated to innovating in the areas of injection moulding for optical components with substantial wall thickness and multicomponent structures, as well as advancing the automation of production processes. The in-house tool shop offers design and manufacturing of sophisticated injection moulds for transparent plastic parts. The company supplies customers such as POL, Forvia (Hella), Koito, and Marelli Automotive lighting.



www.ipg.cz



being acquired in 2023, it represents the most recent BR Group's acquisition. With a legacy exceeding 60 years in design and production of injection moulding plastic components, the enterprise undertakes complex projects, especially for the automotive and electrical industries, utilising state-of-the-art technological apparatus. Except for sophisticated plastic injection parts, Linaset has a long tradition in direct pressing of thermosets, including BMC and SMC materials. The inhouse tool shop offers design and manufacturing of moulds for thermoplastics, thermosets, BMC and SMC.



www.linaset.cz



FOREZ[®]

specialises in producing moulded mechanical components and plastic parts predominantly for the automotive and electrical sectors. Forez-manufactured components are found in one out of every three car brands globally, with prestigious names such as Porsche and Bentley among them. Forez's primary strength lies in its expertly refined process for integrating moulded plastic with moulded metal to create a single, unified product. The in-house highly automated tool shop designs and manufactures both, plastic injection moulds and metal stamping tools.



www.forez.cz

KOMAS[®]

stands as a leading facility in the metal stamping field, effectively complementing the product range provided by the BR Group's plastic enterprises, serving the automotive sector's clientele. With a legacy stretching over fifty years in metal pressing operations based in Komárov near Opava, the company has maintained a prominent role in the industry since 1970 and was incorporated into the BR Group in 2016. Its chief production technique involves the cold stamping of sheet metal using press machines of 250-500 tons of force. Except for stamping, Komas also offers CNC machining, degreasing, wire cutting, tumbling and welding. Stamping tools are designed and produced in an in-house tool shop.



www.komas.cz





”

We belong to one
of the Czech
Republic's most
traditional
industrial sectors!

”



The Power
of Unity



specialises in producing primarily welded sheet metal components or entire assemblies and utilises cutting-edge CNC machinery. The company has recently upgraded its technological capabilities by incorporating the Salvagnini automatic bending machine, which enhances the speed, accuracy, and efficiency of production. This new addition not only elevates the quality of output but also diminishes the amount of manual labour and increases operational safety. Spojmont delivers parts to sectors such as rail transportation, data centres, and telecommunications facilities, among others.



www.spojmont.com



produces heavy weldments for the construction and agricultural machinery sectors. The firm has recently enhanced its technology with the acquisition of an advanced SafanDarley H-Brake Ultra press brake with a pressing length of 4,250 mm and a force capacity of 3,200 kN. In 2024, Lucco shipped an exceptionally large component measuring 12 meters in length and more than 2 meters in width to a client in Ireland. The company's principal international partners include Terex, Yanmar, and Volvo.



www.lucco.cz



echnik

predominantly manufactures components for clean energy production technologies, with a significant portion consisting of fixtures for attaching solar panels to power plant rooftops. Historically, the company was a segment of the major Czech home appliance manufacturer ETA. The Milotice facility has a long-standing history and, to a limited extent, continues to produce home appliances for world-famous brands like Bosch-Siemens, Braun, De'Longhi, Omega, and ETA, among others. Over the past few years, the company has gradually shifted its focus toward metal machining, particularly specialising in aluminium.



www.e-technikas.cz

Strojírny Prostějov

became an acquisition in 2023 to strengthen the BR Group's engineering sector. The company specialises in the custom manufacturing of technologically complex welded steel structures and components for machine tools, construction, and machinery, focusing on medium-sized series and single-item production. Its primary markets are in Germany and Switzerland.



www.sppv.cz



BR Reality

stands out as the sole entity within the holding that does not engage in manufacturing. This company is responsible for managing and leasing out spaces of the Group's members across the Czech Republic, Poland, and Slovakia. Their portfolio extends beyond industrial spaces to include commercial and residential properties as well.



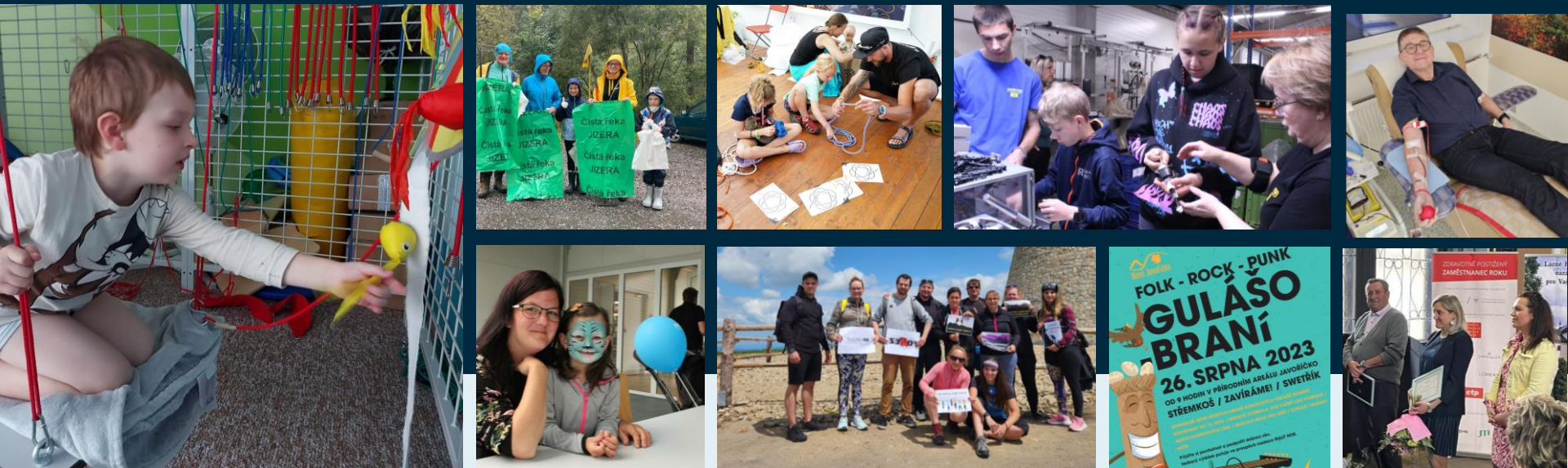
BR Reality



SOCIAL RESPONSIBILITY

BR Group companies are good partners. Wherever they operate, they help the local community. They support:

EVENTS FOR CHILDREN AND YOUTH | SPORTS ACTIVITIES | CHILDREN'S CAMPS | BLOOD DONORS | LOCAL SOCIAL AND CULTURAL EVENTS



HELPING SEBÍK

This fundraising effort, conducted through Kontak Bariéry, was focused on raising money for Sebastian's rehabilitation. The strong response to this campaign inspired the creation of the BR Employee Endowment Fund. The purpose of this fund is to provide assistance to employees of BR Group companies who are facing challenging life circumstances. The endowment fund will begin its operations in 2024.



Lanex

CONROP

singing rock

MONTIX

PF PLASTY CZ

plasty

K KOMAS

SPOJMONT
OSTRAVA

FOREZ

SP Strojírny
Prostějov

technik

LUCCO

LINASET

BR Reality

BR GROUP

BR Group a. s.

Poděbradova 2738/16

702 00 Ostrava

Czech Republic

info@brgroup.cz

www.brgroup.cz

